

LUMA

Wine Cellars



api

Architectural Plastics, Inc.



CONTENTS

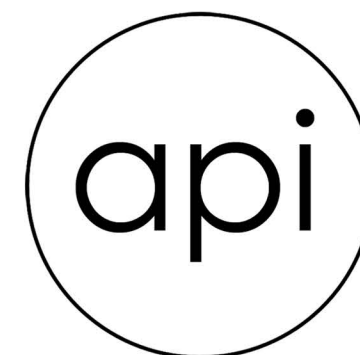
Who We Are	02
What is Acrylic	05
A Case for Light	06
Shelving Guide	07
Residential Cellars	08
Commercial Cellars	37
Tasting Tables	49
Visit Wine Country	55

10

Welcome to Wine Country

Architectural Plastics is located in the heart of historic Northern California Wine Country. Its staff has formed close relationships with local architects, designers, vintners and artists who have helped inspire the LUMA Wine Cellar concept.

This catalog will give you glimpses of how passion for design and viticulture has translated into a truly unique expression of how to showcase the beauty of your wine collection.



Architectural Plastics, Inc.
1299 N McDowell Blvd
Petaluma, CA 94954

800.557.5151
sales@archplastics.com
www.archplastics.com



02

Legacy of Design

CEO and Creative Director Blake Miremont was born into a world filled with artists, designers, builders and architects. His passion for design began as a child, enamored with the unique projects undertaken at Architectural Plastics.

Blake leads the family business, started by his father Pierre Miremont, with an unwavering commitment to innovation, quality and service.

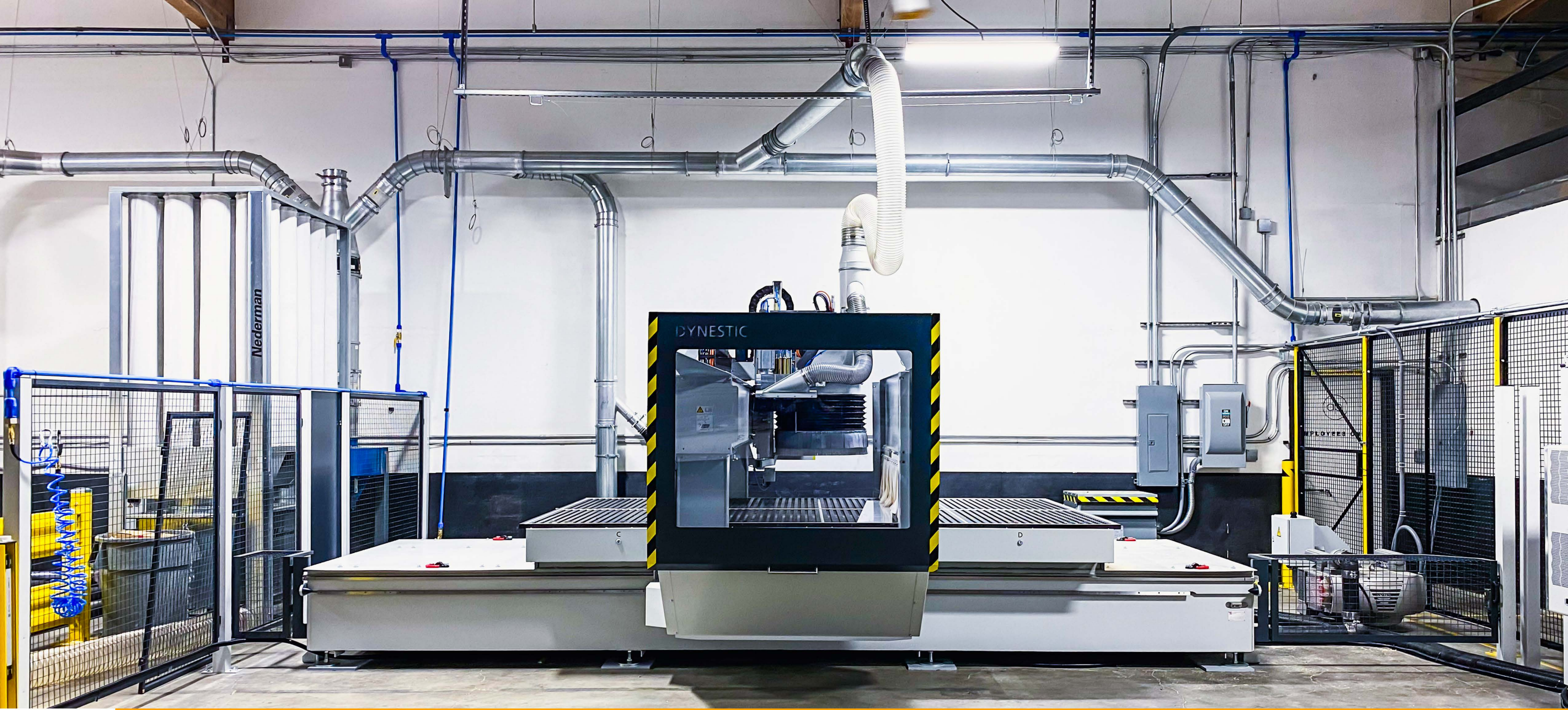


US Manufacturing Lives On

There is a commonly held belief that America has lost its competitive edge in the global production of goods. Architectural Plastics, Inc. runs counter to this narrative.

Artisan fabrication methods, developed over forty years, are coupled with the latest in automated CNC machinery and CAD software. The results of this marriage are world class products that show American manufacturing is not only alive, it's flourishing.

All of our cellars are designed, built and tested under one roof at our newly renovated 16,000 sqft. facility in Northern California. This ensures the highest level of quality throughout all phases of production and faster build times than companies that outsource their labor.



CNC Precision & Efficiency

Architectural Plastics, Inc. has recently completed a five year infrastructure and machinery improvement plan. Central to this plan have been investments in the latest CNC technology.

Multiple brand new machines have been installed at our facility to allow our production team to reach new levels of accuracy and creativity. Our design team has also been heavily involved in exploring the potential of these machines.

What this means for our clients is an almost unparalleled level of quality and precision in the wine racks made at our facility. Project lead times have also been significantly reduced due to the speed at which the new machines operate.



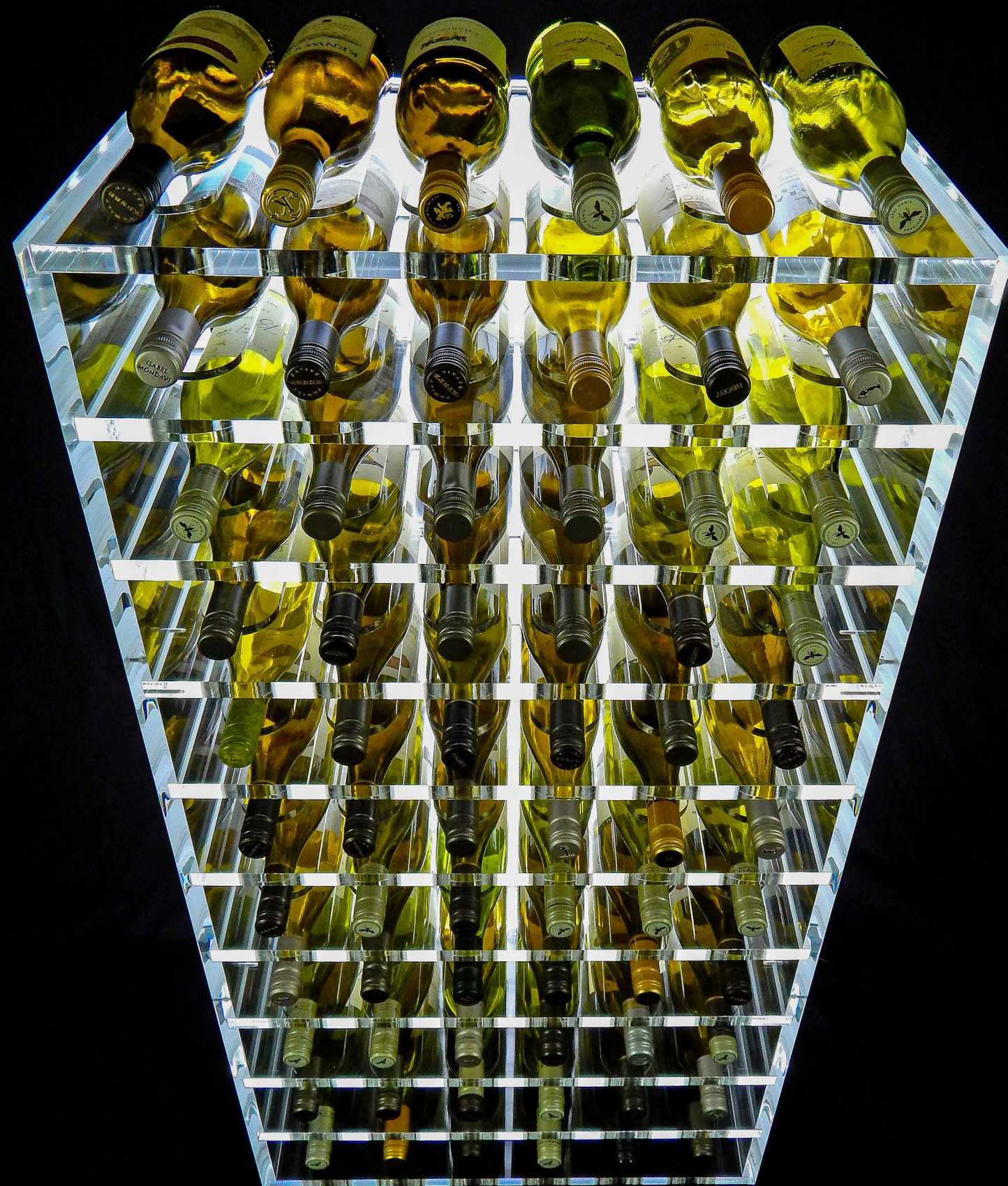
05

What is Acrylic?

All LUMA Wine Cellars are made from the highest quality acrylic on the market. Acrylic shares the same optical clarity as a high karat diamond, is half the weight of glass and will not yellow over time.

This beautiful material is a perfect choice for wine cellars because it affords an unobstructed view of your collection. As you walk past your cellar, the colors and shapes of your wine collection will shimmer through the acrylic with a dazzling, diamond-like effect.





06

A Case for Light

Architectural Plastics, Inc. has reimagined the role of light in wine cellar design. Rather than an accent, light is seen as a physical medium contained within acrylic.

Acrylic has the unique ability to bend, refract and release light in a myriad of dramatic ways. The manner by which light is coaxed into the material can make it shimmer or become nearly invisible; leaving only luminescence and wine bottles behind.

Shelving and Drawer Guide

a. Standard Shelf

b. Label View Shelf

c. Wine Glass Shelf

d. Display Shelf

e. 'X' Shelf

f. Wine Accessory Drawer

g. Bottle Drawer



LUMA RESIDENTIAL

Architectural Plastics has created bespoke cellars for private clients the world over.

None of the cellars in this catalogue come from “off-the-shelf” bins or pre-made kits. Each cellar was designed and made by Architectural Plastics in collaboration with homeowners, architects, interior designers or master builders.

Due to their transparent nature, LUMA Wine Cellars blend seamlessly with a wide variety of design styles. The clear acrylic they are comprised of will pull in color and texture from any material that surrounds it. If the wine racks are placed in the center of a room or used as a partition between rooms, they will largely disappear altogether.

Versatility, minimalism and light are at the heart of LUMA design language.

Photo: “Museum Modern Cellar” Los Angeles, CA



Museum Modern Cellar

Cellar Type: Glass enclosed wine wall partition

Components: LUMA racks, wooden cabinets, glass enclosure

Lighting: LED panels along top, bottom, left and right sides of cellar

Location: Beverly Hills, CA



Artistic Tile Cellar

Cellar Type: Glass enclosed wine cellar

Components: LUMA racks, butcher block table, marble, meat dry ager

Lighting: Recessed LED lighting overhead

Location: Tenaflly, NJ



11

Kentfield Pool House

Cellar Type: Glass enclosed wine cellar, peninsula racking

Components: LUMA racks with stainless steel bars, room clad in copper paneling, black lavastone floor

Lighting: Recessed LED light bars overhead

Location: Kentfield, CA

Architect: Butler Armsden Architects





Kentfield Pool House (cont'd)

Cellar Type: Glass enclosed wine cellar, peninsula racking

Components: LUMA racks with stainless steel bars, acrylic step ladder, room clad in copper paneling, black lavastone floor

Lighting: Recessed LED light bars overhead

Location: Kentfield, CA

Architect: Butler Armsden Architects

The Wine Vault

Cellar Type: Wine cellar

Components: LUMA racks with storage drawers, room clad in stainless steel sheeting

Lighting: Recessed LED lights overhead and embedded LED strips

Location: Pacific Heights, CA

Architect: Butler Armsden Architects





The Wine Vault (cont'd)

Cellar Type: Wine cellar

Components: LUMA racks with storage drawers, room clad in stainless steel sheeting

Lighting: Recessed LED lights overhead and embedded LED strips

Location: Pacific Heights, CA

Architect: Butler Armsden Architects

Schyman Cellar

Cellar Type: Glass enclosed wine wall

Components: LUMA racks, room clad in black mirror, concrete floor

Lighting: RGB color changing LED light panels behind racks

Location: Las Vegas, NV





Schyman Cellar (cont'd)

Cellar Type: Glass enclosed wine wall

Components: LUMA racks, room clad in black mirror, concrete flooring

Lighting: RGB color changing LED light panels behind racks

Location: Las Vegas, NV



17

Paris Hilton's Cellar

Cellar Type: Double, glass enclosed, partition cellars

Components: LUMA racks, white oak hardwood flooring

Lighting: LED light strips

Location: Beverly Hills, CA

Interior Designer: Faye Resnick Design



Paris Hilton's Cellar (cont'd)

Cellar Type: Double, glass enclosed, partition cellars

Components: LUMA racks, white oak hardwood flooring

Lighting: LED light strips

Location: Beverly Hills, CA

Interior Designer: Faye Resnick Design



Rustic Modern Cellar

Cellar Type: Walk-in Cellar

Components: LUMA racks, natural stone walls, wood beams, brick floor

Lighting: Custom brackets by API to hold LED lighting strips

Location: Napa, CA

General Contractor: CRC Builders



2 Rustic Modern Cellar (cont'd)

Cellar Type: Walk-in Cellar

Components: LUMA racks, natural stone walls, wood beams, brick floor

Lighting: Custom brackets by API to hold LED lighting strips

Location: Napa, CA

General Contractor: CRC Builders



SF Designer Showcase Cellar

Cellar Type: Walk-in cellar

Components: LUMA racks, walnut flooring, burnt wood wall cladding

Lighting: LED overhead lights

Location: San Francisco, CA

Interior Designer: Studio Nahemow

Dallas Industrial

Cellar Type: Glass enclosed wine walls

Components: LUMA racks, hardwood flooring

Lighting: LED light panels behind racks

Location: Dallas, TX

Designer & Home Builder: RPCD Inc.





Dallas Industrial (cont'd)

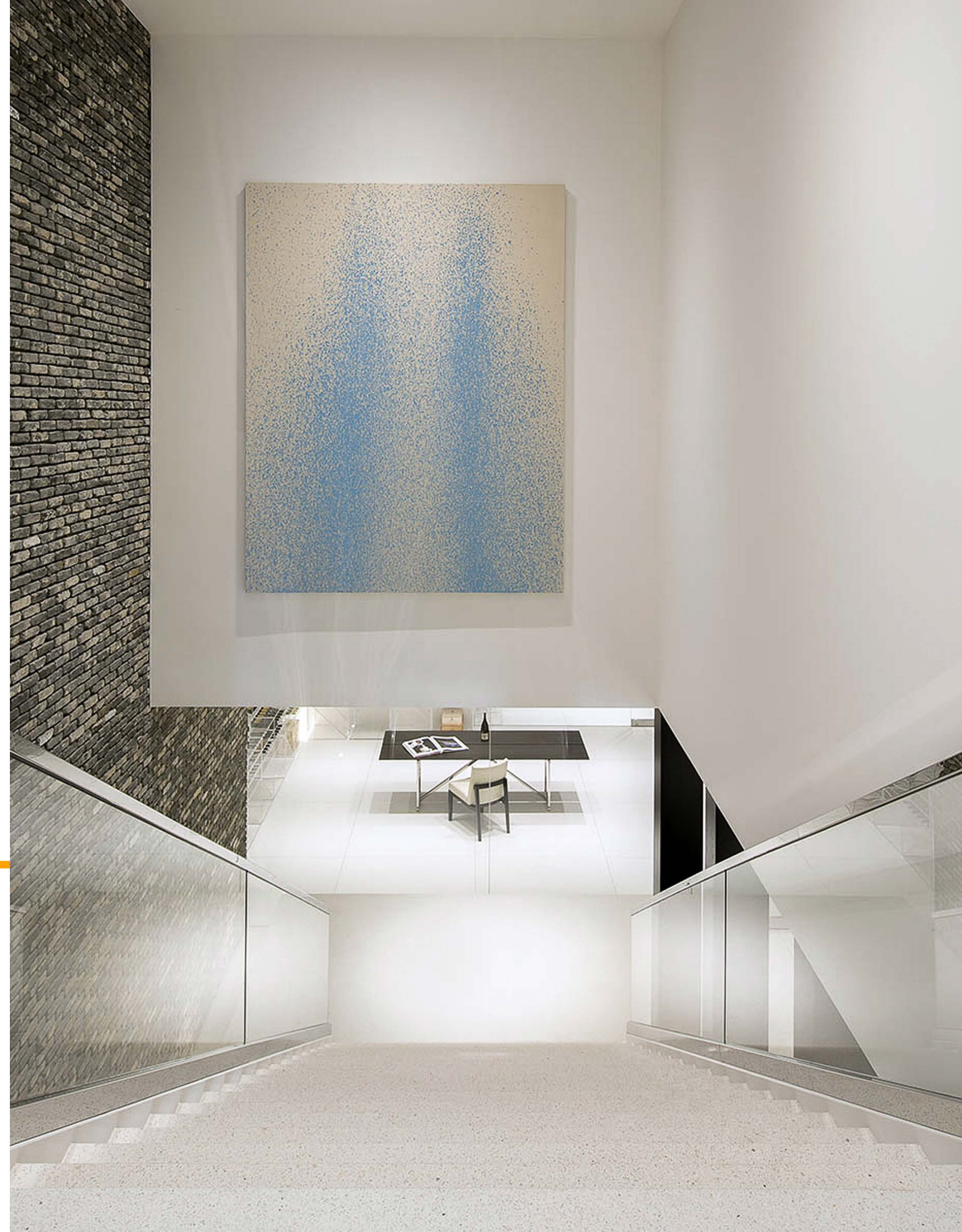
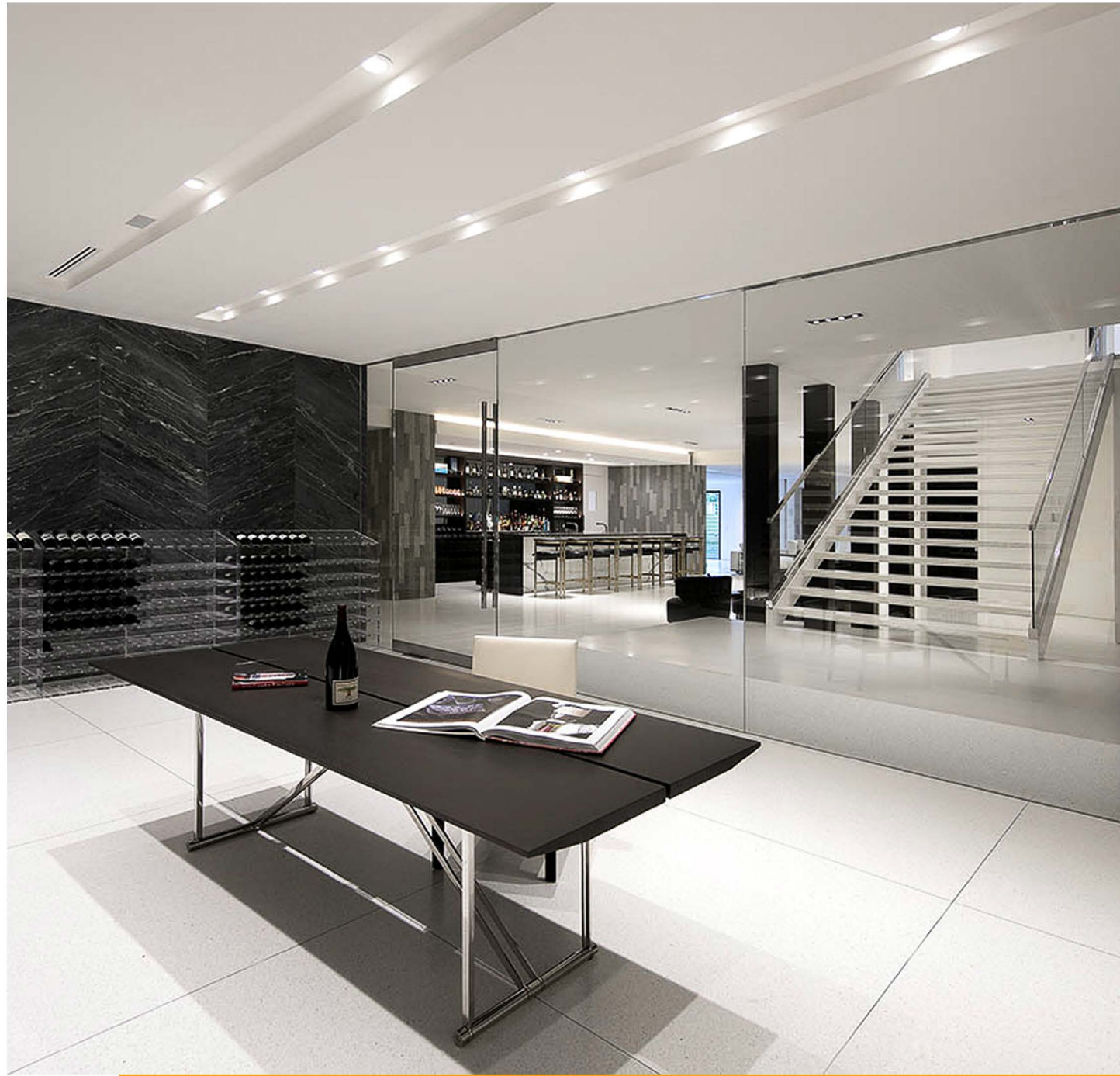
Cellar Type: Glass enclosed wine walls

Components: LUMA racks, hardwood flooring

Lighting: LED light panels behind racks

Location: Dallas, TX

Designer & Home Builder: RPCD Inc.



24

Holmby Hills

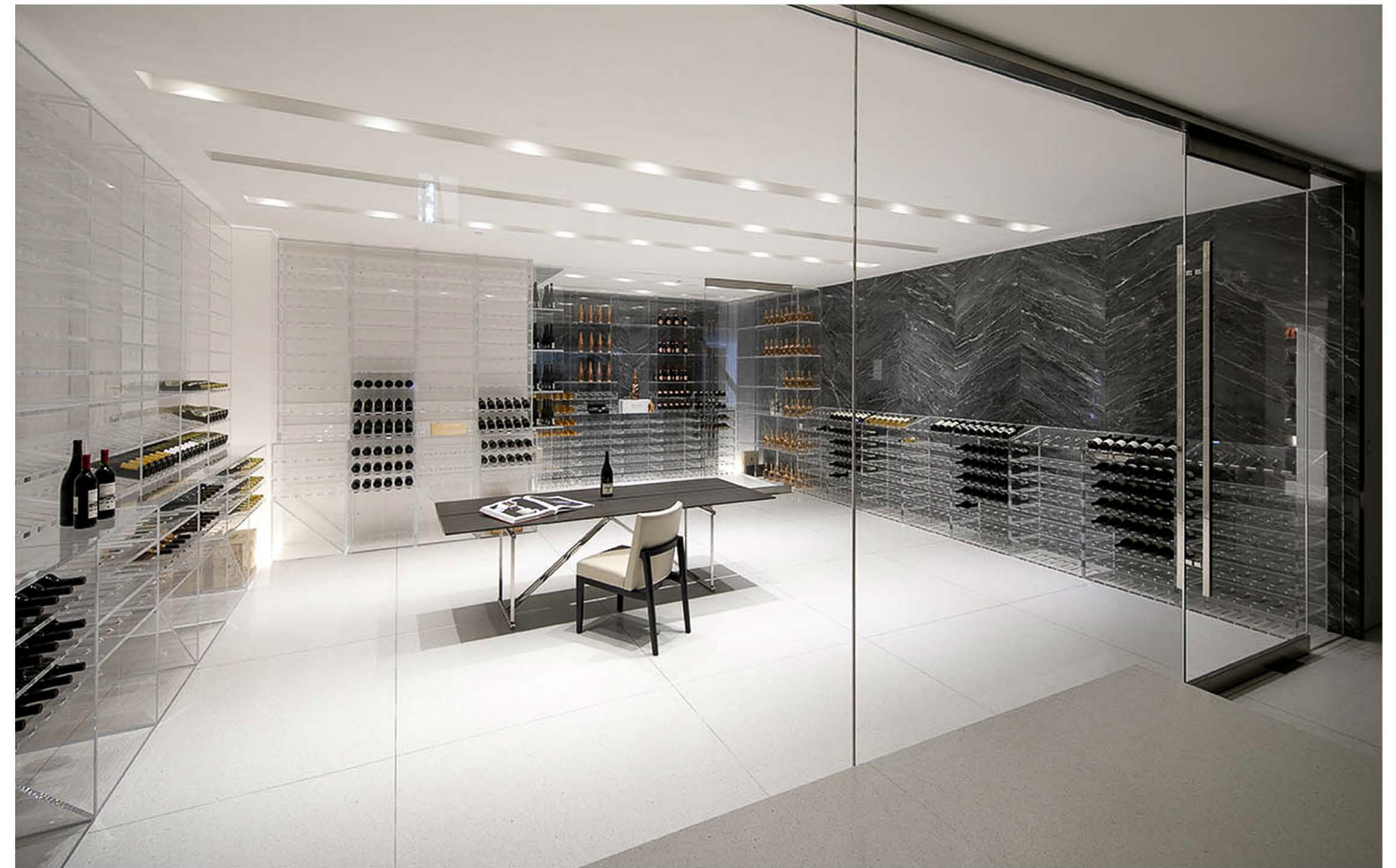
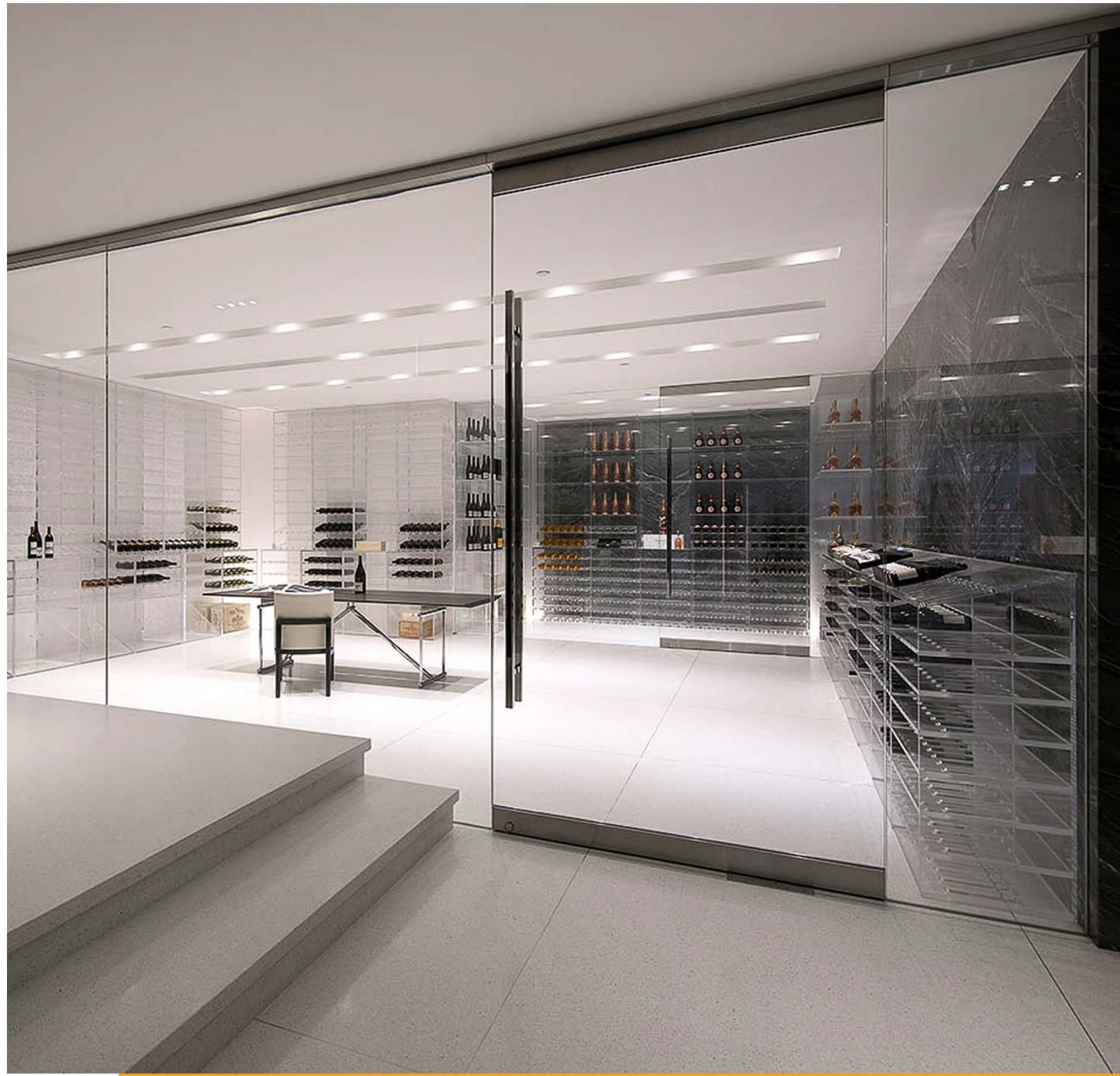
Cellar Type: Glass enclosed wine cellar with attached Champagne Cellar, detached black acrylic bar shelving

Components: LUMA racks, black marble, white marble, tile flooring

Lighting: Recessed LED lighting overhead

Location: Holmby Hills, CA

Designer: Stephen Stone Designs



25

Holmby Hills (cont'd)

Cellar Type: Glass enclosed wine cellar with attached Champagne Cellar, detached black acrylic bar shelving

Components: LUMA racks, black marble, white marble, tile flooring

Lighting: Recessed LED lighting overhead

Location: Holmby Hills, CA

Designer: Stephen Stone Designs



Architectural Digest Feature

Cellar Type: Glass enclosed wine cellar

Components: LUMA racks, storage drawers, stone floor

Lighting: LED back panels behind racks

Location: Greenwich Village, NY

Home Builder: Xhema Industries of NY

Architectural Digest Magazine: Dec 2018 Issue

Article: 'On View: Allison and Warren Kanders Invite AD Into Their Art-Filled Sanctuary'



27

Mercer Island Cellar

Cellar Type: Under stair cellar, walk-in

Components: LUMA racks, black metal accents, hardwood flooring

Lighting: LED back panels & recessed LED lighting overhead

Location: Mercer Island, WA

Architect: Studio AM Architects

Photographer: Miranda Estes Photography



Florida Modern Cellar

Cellar Type: Glass enclosed, walk-in cellar

Components: LUMA racks, wide plank white oak flooring

Lighting: LED over-head lighting & light strips

Location: Deerfield Beach, FL

Interior Designer: Ava Gray Interiors



2

Silicon Valley Modern

Cellar Type: Glass enclosed wine wall

Components: LUMA racks, white marble wall cladding

Lighting: Recessed LED lighting overhead

Location: San Jose, CA

A modern walk-in cellar with glass doors, LUMA racks, and lit onyx counters. The cellar is located in a kitchen area with dark wood cabinets and a marble countertop. The cellar is filled with wine bottles and has a clean, minimalist design.

Houston Hills

Cellar Type: Glass enclosed, walk-in cellar

Components: LUMA racks, lit onyx counters, tile flooring

Lighting: LED back panels & over-head lighting & light strips

Location: Houston, TX



1
3

Cave Cellar

Cellar Type: Glass enclosed, walk-in cellar

Components: LUMA racks, white oak flooring

Lighting: Recessed LED lighting overhead

Location: Weston, CT

Builder: Old World Construction





Hartman Cellar

Cellar Type: Glass enclosed wine wall

Components: LUMA racks with stainless steel bars, hardwood flooring

Lighting: Recessed LED lighting overhead

Location: Nantucket, MA



3 Pacific Heights Residence

Cellar Type: Glass enclosed wine wall

Components: LUMA racks, hardwood flooring

Lighting: LED light panels behind racks

Location: Pacific Heights, CA



Mountain Retreat

Cellar Type: Glass enclosed wine wall

Components: LUMA racks, concrete floor

Lighting: LED lighting overhead, LED light strips wrapping racks

Location: Monte Sereno, CA



53

Palm Springs Residence

Cellar Type: Glass enclosed wine wall

Components: LUMA racks, cellar clad in glass subway tile, stone tile flooring

Lighting: Recessed LED lighting overhead

Location: Palm Springs, CA



Hamptons Hideaway

Cellar Type: Glass enclosed wine wall

Components: LUMA racks, tile floor

Lighting: LED light panels behind racks

Location: East Hampton, NY

LUMA COMMERCIAL

Architectural Plastics works with wineries, tasting rooms, restaurants, hotels and nightclubs to create engaging spaces.

The LUMA Wine Cellar line is comprised of several wine rack styles. However, there are many other custom pieces that Architectural Plastics has designed and made for clients looking to go beyond the limitations of a traditional wine cellar concept.

Due to their transparent nature, LUMA Wine Cellars blend seamlessly with a wide variety of design styles. The clear acrylic they are comprised of will pull in color and texture from any material that surrounds it. If the wine racks are placed in the center of a room or used as a partition between rooms, they will largely disappear altogether.

Versatility, minimalism and light are at the heart of LUMA design language.

Photo: "Enoteca Nostrana Restaurant" Portland, OR



Enoteca Nostrana

Space Type: Glass enclosed wine cellar

Components: LUMA racks, black steel flooring and frame for cellar

Lighting: LED strip lights wrapping racks

Location: Portland, OR

Collaborative Partner: Axiom Custom



Enoteca Nostrana (cont'd)

Space Type: Glass enclosed wine cellar

Components: LUMA racks, black steel flooring and frame for cellar

Lighting: LED strip lights wrapping racks

Location: Portland, OR

Collaborative Partner: Axiom Custom





OAKVILLE GROCERY

NAPA VALLEY EST. 1881



WINE VAULT

by Architectural Plastics, Inc.

Oakville Grocery Co.

Space Type: Walk-in cellar
Components: LUMA racks, wood toe kicks, tile flooring
Lighting: LED back panels & LED overhead lighting
Location: Oakville, CA



41

Oakville Grocery Co.

Space Type: Walk-in cellar

Components: LUMA racks, wood toe kicks, tile flooring

Lighting: LED back panels & LED overhead lighting

Location: Oakville, CA



Acumen Wine Gallery

Space Type: Glass enclosed wine cellar

Components: LUMA racks, black steel counters

Lighting: LED strip lights wrapping racks

Location: Napa, CA



43

Acumen Wine Gallery (cont'd)

Space Type: Glass enclosed wine cellar

Components: LUMA racks, black steel counters

Lighting: LED strip lights wrapping racks

Location: Napa, CA





Acumen Wine Gallery (cont'd)

Space Type: Glass enclosed wine cellar

Components: LUMA racks, black steel counters

Lighting: LED strip lights wrapping racks

Location: Napa, CA



45

Campo Al Doccia Villa

Space Type: Glass enclosed wine cellar

Components: LUMA racks, tile flooring

Lighting: LED back panels behind racks

Hotel: Casali di Casole

Location: Tuscany, Italy





Campo Al Doccio Villa (cont'd)

46

Space Type: Glass enclosed wine cellar

Components: LUMA racks, tile flooring

Lighting: LED back panels behind racks

Hotel: Casali di Casole

Location: Tuscany, Italy



47 Campo Al Doccia Villa (cont'd)

Space Type: Glass enclosed wine cellar

Components: LUMA racks, tile flooring

Lighting: LED back panels behind racks

Hotel: Casali di Casole

Location: Tuscany, Italy



Al Biernat's North Steakhouse

Space Type: Glass enclosed wine cellar

Components: LUMA racks, concrete flooring

Lighting: Recessed LED lights overhead

Location: Dallas, TX



94 The Opulent World of JCB

The prolific vintner Jean Charles Boisset owns several wineries throughout the world; about half a dozen of them in Napa and Sonoma county. His unique style and attention to detail have made his wineries and tasting rooms some of the most frequented in California's wine country.

Architectural Plastics has worked with Boisset to design and create bespoke pieces for several of his Northern California locations.

This ongoing partnership has been a personal favorite for the Architectural Plastics design and fabrication team.

Photo: "JCB Tasting Salon" Yountville, CA



50 JCB Tasting Salon, Yountville

Space Type: Private tasting room

Components: LUMA racks, acrylic tasting table filled with gold foil and jewelry

Lighting: Recessed LED lighting overhead

Tasting Room: JCB Tasting Salon

Location: Yountville, CA

Buena Vista Winery

Space Type: Private tasting cave

Components: Acrylic tasting tables, filled with gold foil and jewelry

Lighting: LED strip up lights and overhead chandelier

Location: Sonoma, CA





Buena Vista Winery (cont'd)

Space Type: Private tasting cave

Components: Acrylic tasting tables, filled with gold foil and jewelry

Lighting: LED strip up lights and overhead chandelier

Location: Sonoma, CA



53

JCB Tasting Salon, Healdsburg

Space Type: Tasting room

Components: Acrylic tasting table, filled with gold foil and jewelry

Lighting: Recessed LED lights overhead

Location: Healdsburg, CA



JCB Tasting Salon (cont'd)

Space Type: Tasting room

Components: Acrylic tasting table, filled with gold foil and jewelry

Lighting: Recessed LED lights overhead

Location: Healdsburg, CA



55 Visit California Wine Country

We would like to extend an invitation to any collector interested in LUMA Wine Cellar products or acrylic tasting tables.

All products are designed and manufactured in Sonoma County California. You are invited to visit and get a personal tour of the showroom and 16,000 sqft manufacturing facility. You can see a variety of finished products and learn a bit about how they are made.

It is always a pleasure to meet clients in person and work through their design goals. Upon completion of your meeting at Architectural Plastics, you can then explore wine country! There are several local wineries and tasting rooms that feature LUMA wine racks and acrylic tasting tables.

Private tastings and suggested tours at these locations can all be arranged by Architectural Plastics to ensure you have a wonderful time.

Please contact your Architectural Plastics representative for booking. Cheers!